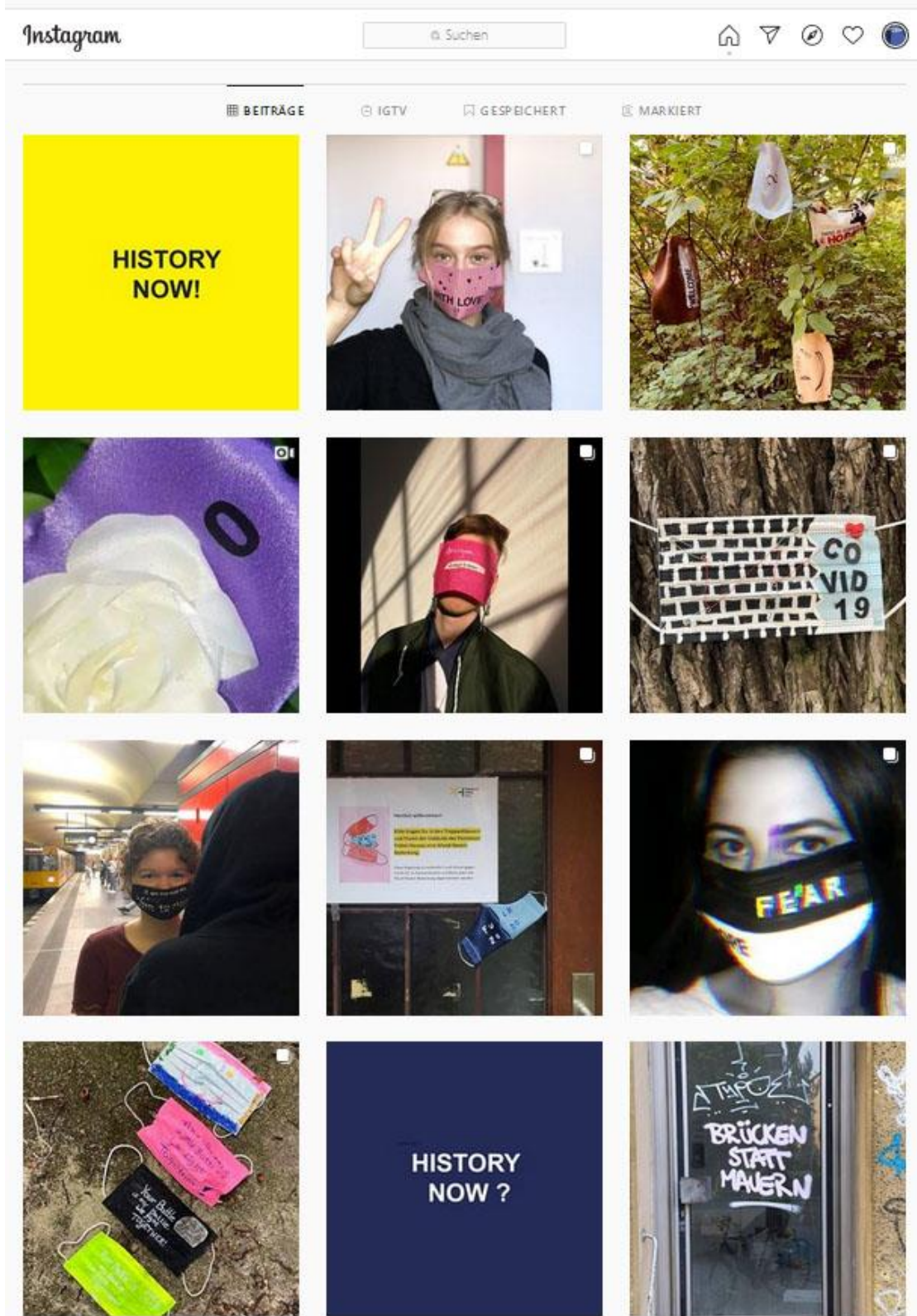
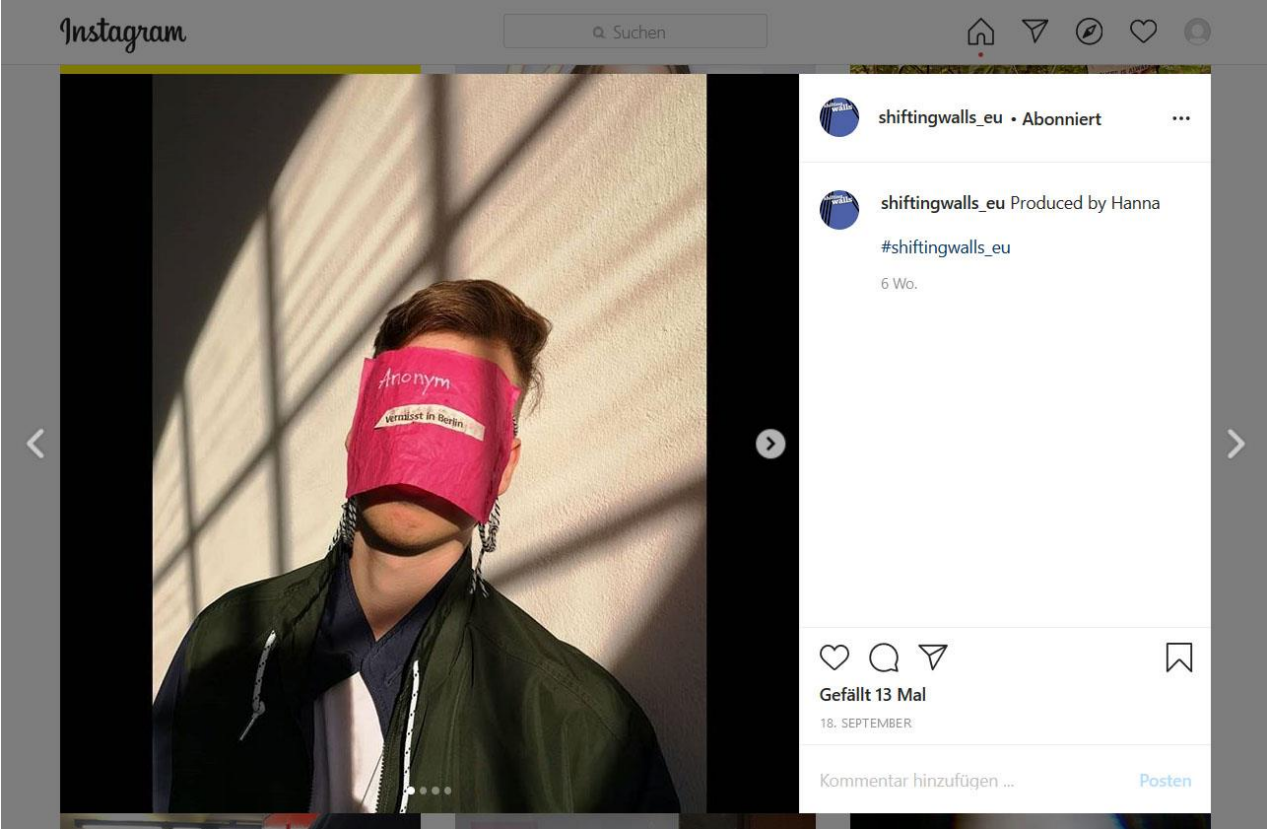


Examples – Mask Stories / Maskengeschichten

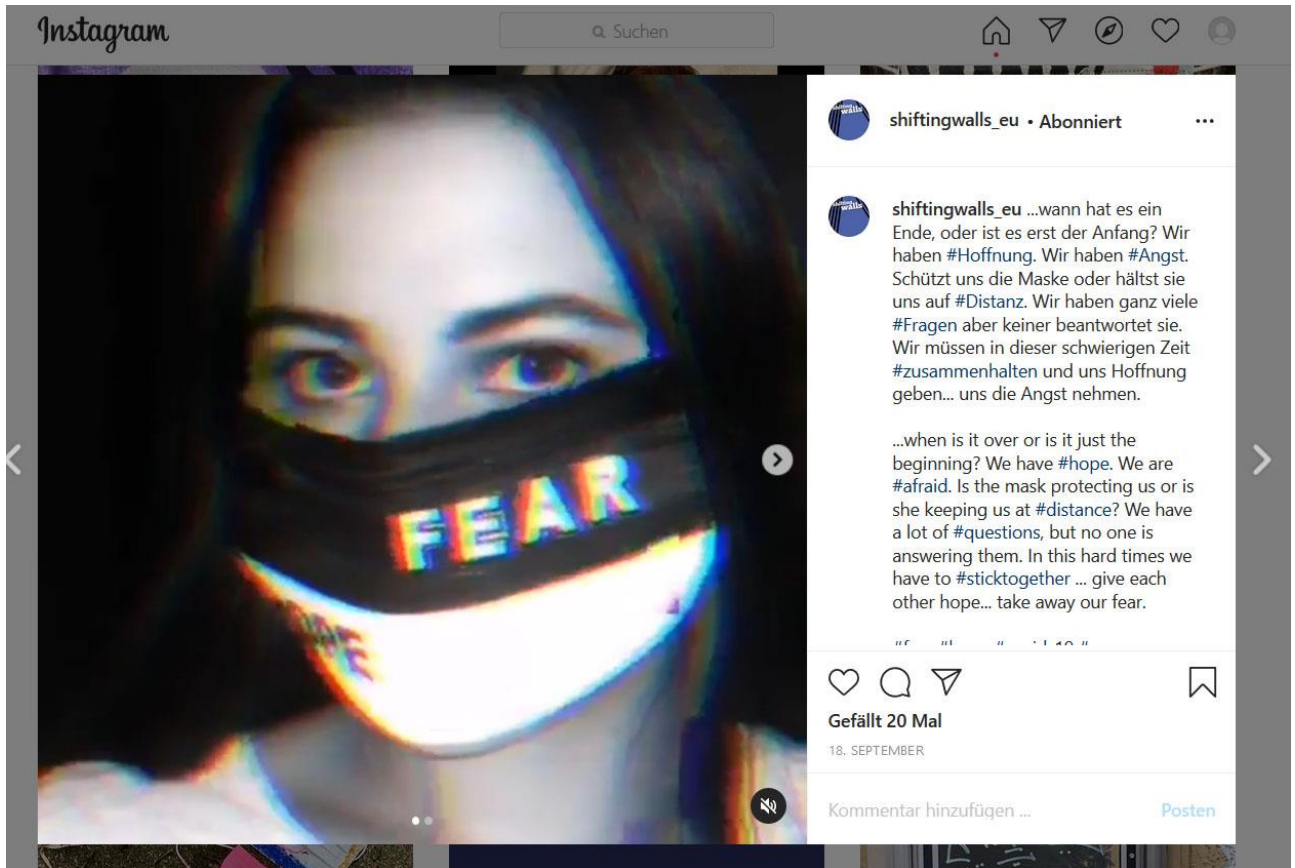




„The mask is like a wall – we keep distance. The string is the connection, die question symbolises insecurity. Despite the wall – we still understand and love each other.“



No comment.



Co-funded by the
Erasmus+ Programme
of the European Union

shifting walls – European History Through the Eyes of the Young - VG-IN-BE-19-28-059960
The European Commission's support for this project does not constitute an endorsement of the contents, which reflect the views only of the authors, and the Commission cannot be held responsible for any use which may be made of the information contained therein.
www.shiftingwalls.eu [instagram: #shiftingwalls_eu](https://www.instagram.com/shiftingwalls_eu)